

Brookwood School District 167

14/15 Enrollment Projection



Middle Cities
EDUCATION ASSOCIATION

www.middlecities.org

Brookwood School District 167 - 14/15

Table of Contents

Table of County Births	1
Historic and Current Enrollment	2
Method 1 Tables	
Five year Projected Enrollments	3
Past, Present, Future Enrollment Comparison	4
Enrollment Charts	5
Ten year Projected Enrollments	7
Method 2 Tables	
Five year Projected Enrollments	8
Past, Present, Future Enrollment Comparison	9
Enrollment Charts	10
Ten year Projected Enrollments	12
Method 3 Tables	
Five year Projected Enrollments	13
Past, Present, Future Enrollment Comparison	14
Enrollment Charts	15
Ten year Projected Enrollments	17
Accuracy Table	18
Staffing Charts	19
Cross-Method Charts	25

Brookwood School District 167 - 14/15

County Births - Cook County

2004	33,401
2005	33,144
2006	33,481
2007	32,945
2008	32,328
2009	31,295
2010	30,190
2011	29,599
2012	29,242
2013	29,238
2014	28,394

Brookwood School District 167 - 14/15

Table 1 - Historic & Current Enrollment

Survival Rate shown in italics

	09/10	10/11	11/12	12/13	13/14	14/15
K	108	107 <i>0.32%</i>	118 <i>0.35%</i>	113 <i>0.34%</i>	124 <i>0.38%</i>	102 <i>0.33%</i>
1	121	120 <i>111.11%</i>	119 <i>111.21%</i>	127 <i>107.63%</i>	126 <i>111.50%</i>	136 <i>109.68%</i>
2	116	127 <i>104.96%</i>	128 <i>106.67%</i>	118 <i>99.16%</i>	138 <i>108.66%</i>	121 <i>96.03%</i>
3	129	119 <i>102.59%</i>	134 <i>105.51%</i>	126 <i>98.44%</i>	115 <i>97.46%</i>	129 <i>93.48%</i>
4	121	130 <i>100.78%</i>	120 <i>100.84%</i>	140 <i>104.48%</i>	132 <i>104.76%</i>	125 <i>108.70%</i>
5	127	110 <i>90.91%</i>	140 <i>107.69%</i>	121 <i>100.83%</i>	136 <i>97.14%</i>	131 <i>99.24%</i>
6	134	122 <i>96.06%</i>	113 <i>102.73%</i>	152 <i>108.57%</i>	126 <i>104.13%</i>	137 <i>100.74%</i>
7	119	134 <i>100.00%</i>	135 <i>110.66%</i>	116 <i>102.65%</i>	150 <i>98.68%</i>	125 <i>99.21%</i>
8	145	120 <i>100.84%</i>	124 <i>92.54%</i>	134 <i>99.26%</i>	130 <i>112.07%</i>	159 <i>106.00%</i>

K-4	595	603	619	624	635	613
5-6	261	232	253	273	262	268
7-8	264	254	259	250	280	284
K-8	1,120	1,089	1,131	1,147	1,177	1,165

Brookwood School District 167 - 14/15

Table 2 - Projected Enrollment Five Years

Method 1

	15/16	16/17	17/18	18/19	19/20
K	104 <i>0.35%</i>	102 <i>0.35%</i>	101 <i>0.35%</i>	101 <i>0.35%</i>	98 <i>0.35%</i>
1	112 <i>110.23%</i>	115 <i>110.23%</i>	112 <i>110.23%</i>	111 <i>110.23%</i>	111 <i>110.23%</i>
2	140 <i>103.10%</i>	115 <i>103.10%</i>	119 <i>103.10%</i>	115 <i>103.10%</i>	114 <i>103.10%</i>
3	120 <i>99.49%</i>	139 <i>99.49%</i>	114 <i>99.49%</i>	118 <i>99.49%</i>	114 <i>99.49%</i>
4	134 <i>103.91%</i>	125 <i>103.91%</i>	144 <i>103.91%</i>	118 <i>103.91%</i>	123 <i>103.91%</i>
5	124 <i>99.16%</i>	133 <i>99.16%</i>	124 <i>99.16%</i>	143 <i>99.16%</i>	117 <i>99.16%</i>
6	134 <i>102.45%</i>	127 <i>102.45%</i>	136 <i>102.45%</i>	127 <i>102.45%</i>	146 <i>102.45%</i>
7	140 <i>102.24%</i>	137 <i>102.24%</i>	130 <i>102.24%</i>	139 <i>102.24%</i>	130 <i>102.24%</i>
8	128 <i>102.14%</i>	143 <i>102.14%</i>	140 <i>102.14%</i>	133 <i>102.14%</i>	142 <i>102.14%</i>

K-4	610	596	590	563	560
5-6	258	260	260	270	263
7-8	268	280	270	272	272
K-8	1,136	1,136	1,120	1,105	1,095

Brookwood School District 167 - 14/15

Table 3 - Comparison Between Past, Present and Five Year Projected Enrollments - Method 1
14/15 is the base year. Each year's enrollment is compared to base year. Numbers in italic show percent of current enrollment

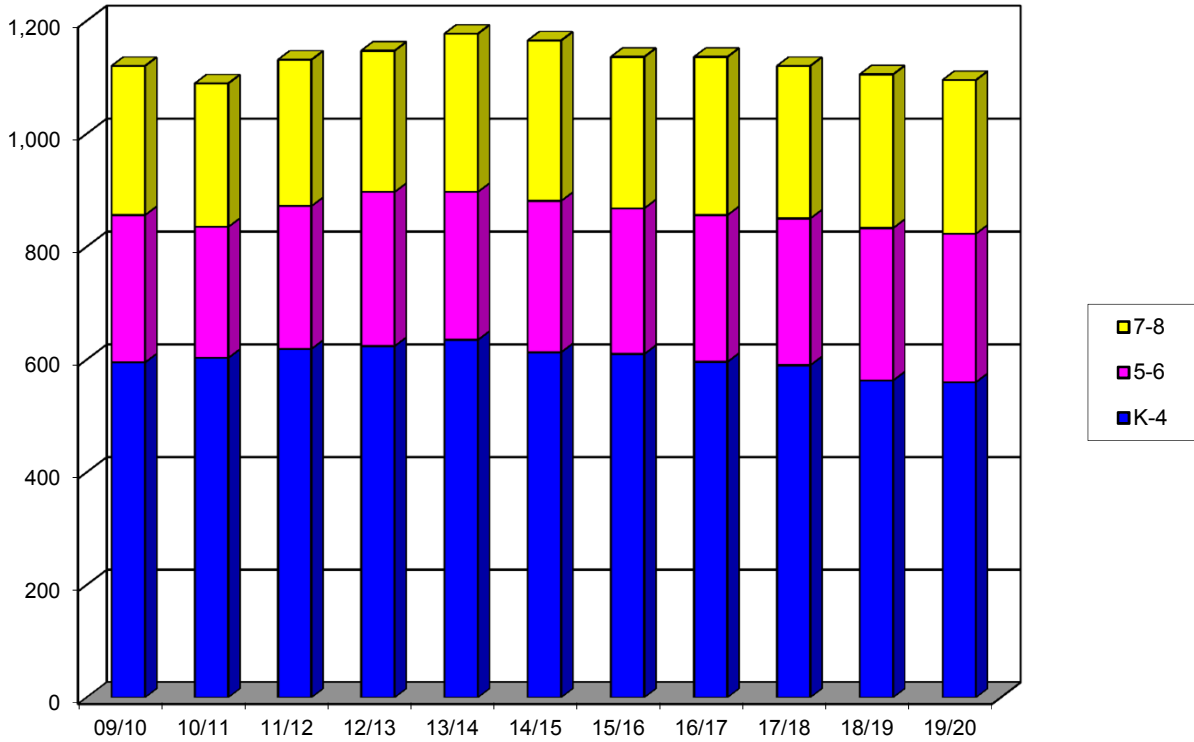
	09/10	10/11	11/12	12/13	13/14	14/15	15/16	16/17	17/18	18/19	19/20
K	108 +5.9%	107 +4.9%	118 +15.7%	113 +10.8%	124 +21.6%	102 +0.0%	104 +2.0%	102 +0.0%	101 -1.0%	101 -1.0%	98 -3.9%
1	121 -11.0%	120 -11.8%	119 -12.5%	127 -6.6%	126 -7.4%	136 +0.0%	112 -17.6%	115 -15.4%	112 -17.6%	111 -18.4%	111 -18.4%
2	116 -4.1%	127 +5.0%	128 +5.8%	118 -2.5%	138 +14.0%	121 +0.0%	140 +15.7%	115 -5.0%	119 -1.7%	115 -5.0%	114 -5.8%
3	129 +0.0%	119 -7.8%	134 +3.9%	126 -2.3%	115 -10.9%	129 +0.0%	120 -7.0%	139 +7.8%	114 -11.6%	118 -8.5%	114 -11.6%
4	121 -3.2%	130 +4.0%	120 -4.0%	140 +12.0%	132 +5.6%	125 +0.0%	134 +7.2%	125 +0.0%	144 +15.2%	118 -5.6%	123 -1.6%
5	127 -3.1%	110 -16.0%	140 +6.9%	121 -7.6%	136 +3.8%	131 +0.0%	124 -5.3%	133 +1.5%	124 -5.3%	143 +9.2%	117 -10.7%
6	134 -2.2%	122 -10.9%	113 -17.5%	152 +10.9%	126 -8.0%	137 +0.0%	134 -2.2%	127 -7.3%	136 -0.7%	127 -7.3%	146 +6.6%
7	119 -4.8%	134 +7.2%	135 +8.0%	116 -7.2%	150 +20.0%	125 +0.0%	140 +12.0%	137 +9.6%	130 +4.0%	139 +11.2%	130 +4.0%
8	145 -8.8%	120 -24.5%	124 -22.0%	134 -15.7%	130 -18.2%	159 +0.0%	128 -19.5%	143 -10.1%	140 -11.9%	133 -16.4%	142 -10.7%

K-4	595 -2.9%	603 -1.6%	619 +1.0%	624 +1.8%	635 +3.6%	613 +0.0%	610 -0.5%	596 -2.8%	590 -3.8%	563 -8.2%	560 -8.6%
5-6	261 -2.6%	232 -13.4%	253 -5.6%	273 +1.9%	262 -2.2%	268 +0.0%	258 -3.7%	260 -3.0%	260 -3.0%	270 +0.7%	263 -1.9%
7-8	264 -7.0%	254 -10.6%	259 -8.8%	250 -12.0%	280 -1.4%	284 +0.0%	268 -5.6%	280 -1.4%	270 -4.9%	272 -4.2%	272 -4.2%
K-8	1,120 -3.9%	1,089 -6.5%	1,131 -2.9%	1,147 -1.5%	1,177 +1.0%	1,165 +0.0%	1,136 -2.5%	1,136 -2.5%	1,120 -3.9%	1,105 -5.2%	1,095 -6.0%

Brookwood School District 167 - 14/15

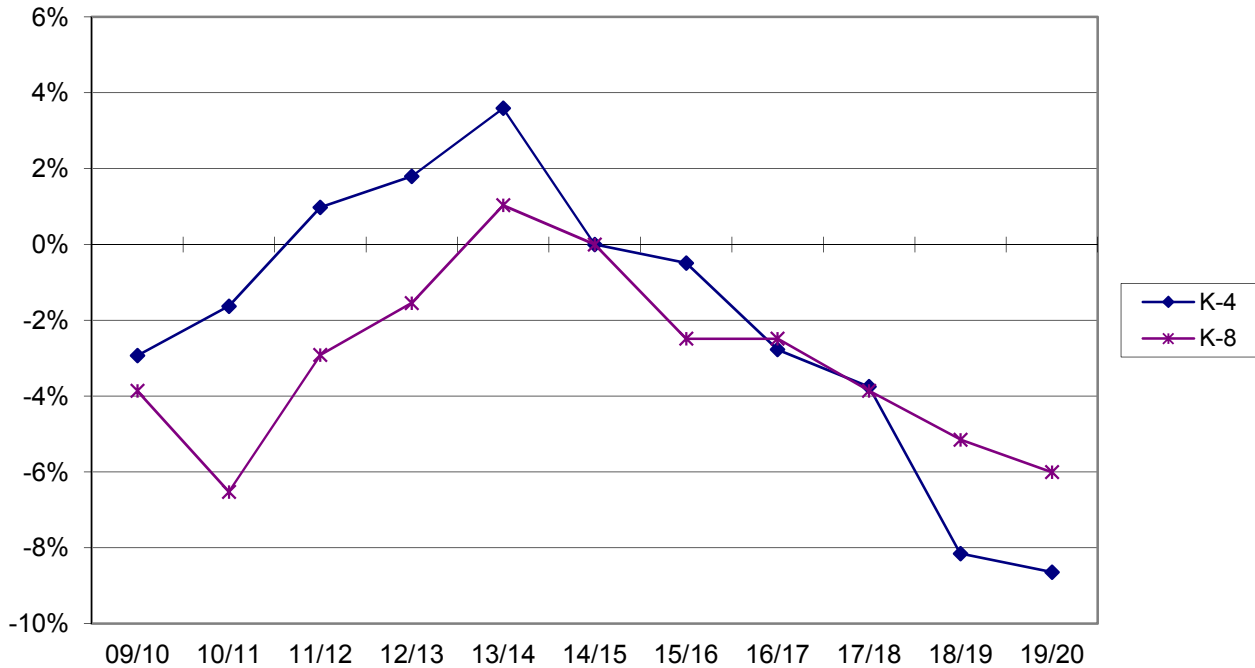
Comparison Between Past, Present and Five Year Projected Enrollment - 09/10 to 19/20

Method 1



Percentage Difference from Current Enrollment (K-4 vs K-8)

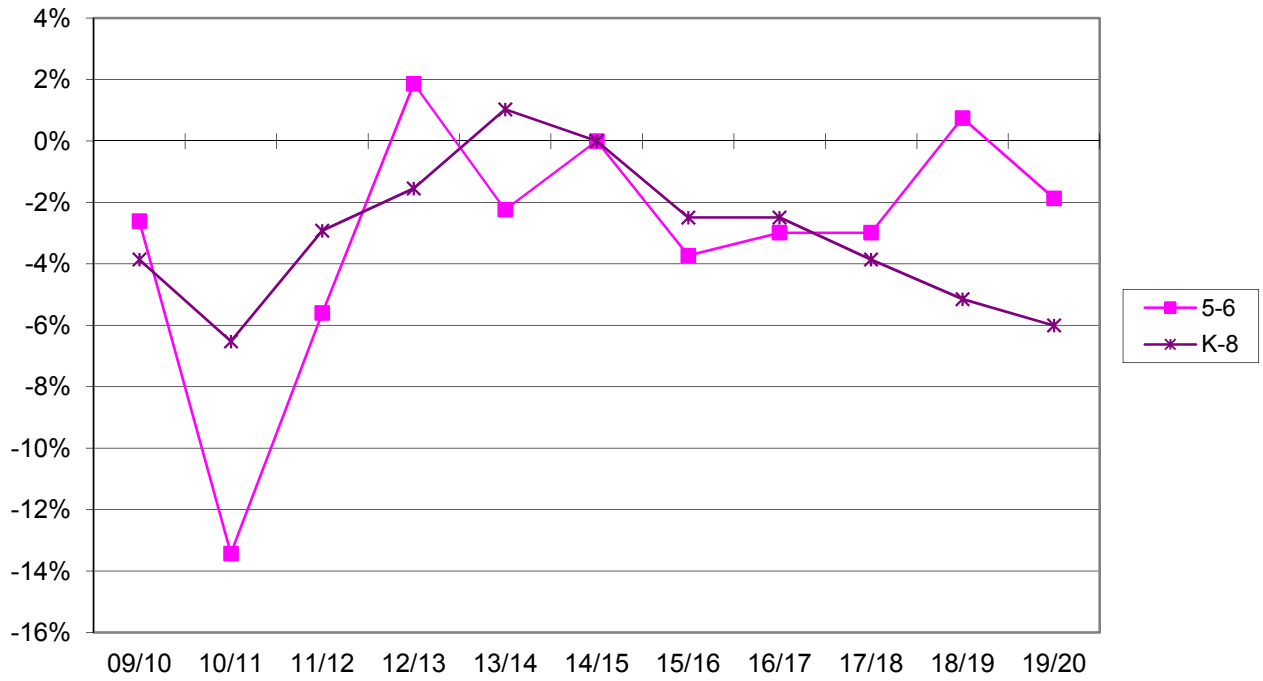
Method 1



Brookwood School District 167 - 14/15

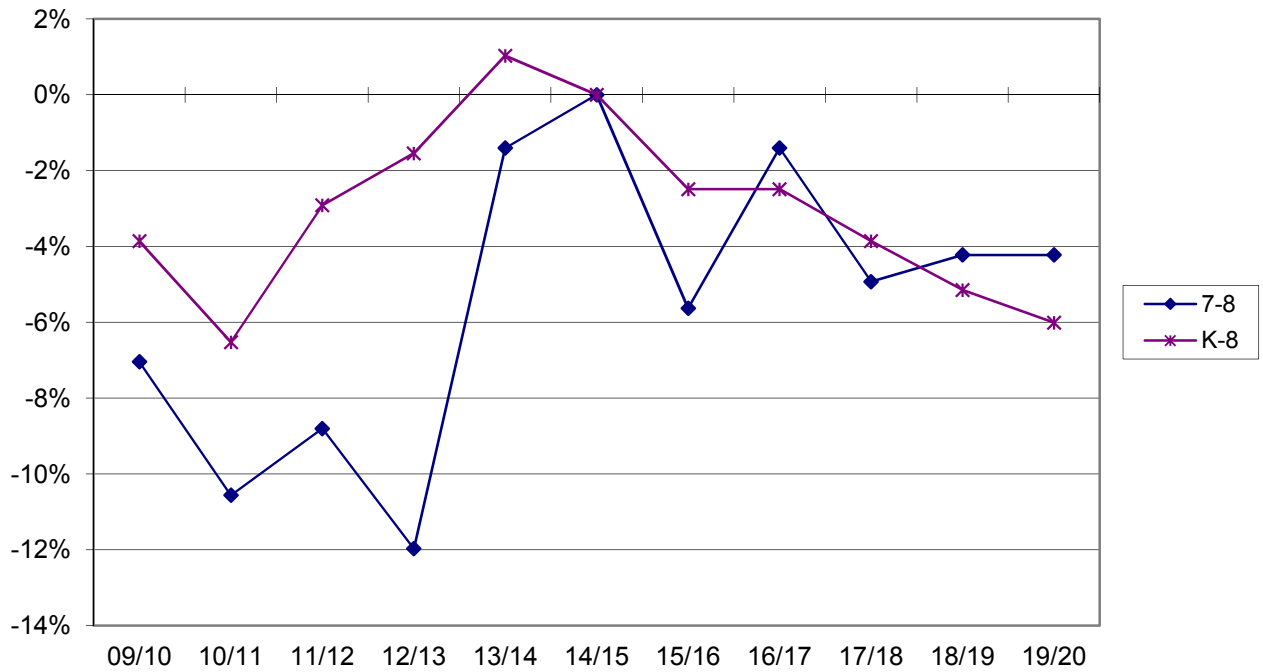
Percentage Difference from Current Enrollment (5-6 vs K-8)

Method 1



Percentage Difference from Current Enrollment (7-8 vs K-8)

Method 1



Brookwood School District 167 - 14/15

Table 4 - Enrollment Projected 10 years - Method 1

	15/16	16/17	17/18	18/19	19/20	20/21	21/22	22/23	23/24	24/25
K	104	102	101	101	98	0	0	0	0	0
1	112	115	112	111	111	108	0	0	0	0
2	140	115	119	115	114	114	111	0	0	0
3	120	139	114	118	114	113	113	110	0	0
4	134	125	144	118	123	118	117	117	114	0
5	124	133	124	143	117	122	117	116	116	113
6	134	127	136	127	146	120	125	120	119	119
7	140	137	130	139	130	149	123	128	123	122
8	128	143	140	133	142	133	152	126	131	126

Brookwood School District 167 - 14/15

Table 5 - Projected Enrollment Five Years

Method 2

	15/16	16/17	17/18	18/19	19/20
K	98 0.33%	96 0.33%	95 0.33%	95 0.33%	93 0.33%
1	112 109.68%	107 109.68%	105 109.68%	104 109.68%	104 109.68%
2	131 96.03%	108 96.03%	103 96.03%	101 96.03%	100 96.03%
3	113 93.48%	122 93.48%	101 93.48%	96 93.48%	94 93.48%
4	140 108.70%	123 108.70%	133 108.70%	110 108.70%	104 108.70%
5	124 99.24%	139 99.24%	122 99.24%	132 99.24%	109 99.24%
6	132 100.74%	125 100.74%	140 100.74%	123 100.74%	133 100.74%
7	136 99.21%	131 99.21%	124 99.21%	139 99.21%	122 99.21%
8	133 106.00%	144 106.00%	139 106.00%	131 106.00%	147 106.00%

K-4	594	556	537	506	495
5-6	256	264	262	255	242
7-8	269	275	263	270	269
K-8	1,119	1,095	1,062	1,031	1,006

Brookwood School District 167 - 14/15

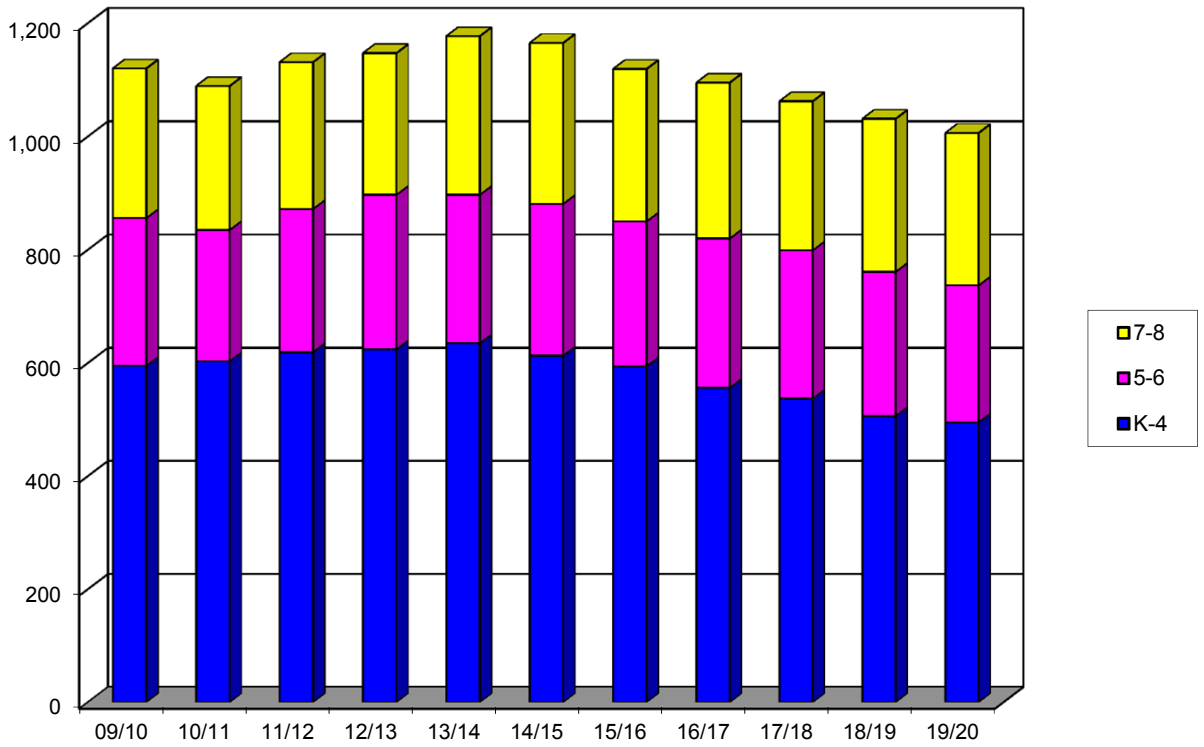
Table 6 - Comparison Between Past, Present and Five Year Projected Enrollments - Method 2
 14/15 is the base year. Each year's enrollment is compared to base year. Numbers in *italic* show percent of current enrollment

	09/10	10/11	11/12	12/13	13/14	14/15	15/16	16/17	17/18	18/19	19/20
K	108 +5.9%	107 +4.9%	118 +15.7%	113 +10.8%	124 +21.6%	102 +0.0%	98 -3.9%	96 -5.9%	95 -6.9%	95 -6.9%	93 -8.8%
1	121 -11.0%	120 -11.8%	119 -12.5%	127 -6.6%	126 -7.4%	136 +0.0%	112 -17.6%	107 -21.3%	105 -22.8%	104 -23.5%	104 -23.5%
2	116 -4.1%	127 +5.0%	128 +5.8%	118 -2.5%	138 +14.0%	121 +0.0%	131 +8.3%	108 -10.7%	103 -14.9%	101 -16.5%	100 -17.4%
3	129 +0.0%	119 -7.8%	134 +3.9%	126 -2.3%	115 -10.9%	129 +0.0%	113 -12.4%	122 -5.4%	101 -21.7%	96 -25.6%	94 -27.1%
4	121 -3.2%	130 +4.0%	120 -4.0%	140 +12.0%	132 +5.6%	125 +0.0%	140 +12.0%	123 -1.6%	133 +6.4%	110 -12.0%	104 -16.8%
5	127 -3.1%	110 -16.0%	140 +6.9%	121 -7.6%	136 +3.8%	131 +0.0%	124 -5.3%	139 +6.1%	122 -6.9%	132 +0.8%	109 -16.8%
6	134 -2.2%	122 -10.9%	113 -17.5%	152 +10.9%	126 -8.0%	137 +0.0%	132 -3.6%	125 -8.8%	140 +2.2%	123 -10.2%	133 -2.9%
7	119 -4.8%	134 +7.2%	135 +8.0%	116 -7.2%	150 +20.0%	125 +0.0%	136 +8.8%	131 +4.8%	124 -0.8%	139 +11.2%	122 -2.4%
8	145 -8.8%	120 -24.5%	124 -22.0%	134 -15.7%	130 -18.2%	159 +0.0%	133 -16.4%	144 -9.4%	139 -12.6%	131 -17.6%	147 -7.5%

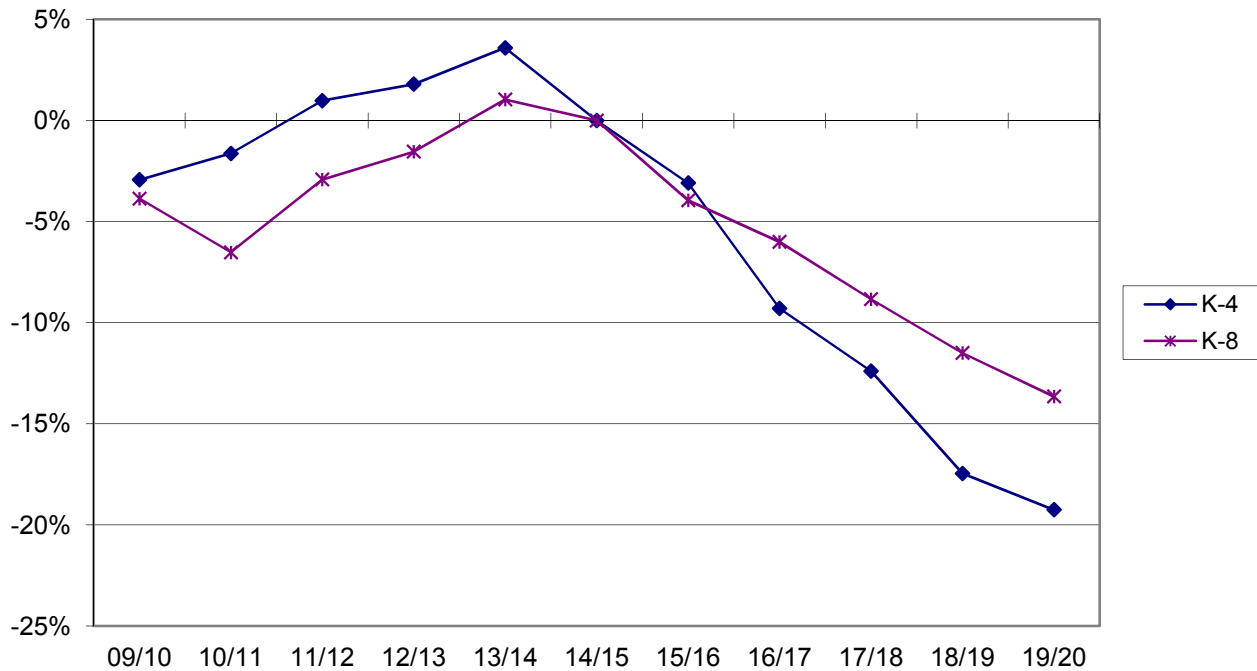
K-4	595 -2.9%	603 -1.6%	619 +1.0%	624 +1.8%	635 +3.6%	613 +0.0%	594 -3.1%	556 -9.3%	537 -12.4%	506 -17.5%	495 -19.2%
5-6	261 -2.6%	232 -13.4%	253 -5.6%	273 +1.9%	262 -2.2%	268 +0.0%	256 -4.5%	264 -1.5%	262 -2.2%	255 -4.9%	242 -9.7%
7-8	264 -7.0%	254 -10.6%	259 -8.8%	250 -12.0%	280 -1.4%	284 +0.0%	269 -5.3%	275 -3.2%	263 -7.4%	270 -4.9%	269 -5.3%
K-8	1,120 -3.9%	1,089 -6.5%	1,131 -2.9%	1,147 -1.5%	1,177 +1.0%	1,165 +0.0%	1,119 -3.9%	1,095 -6.0%	1,062 -8.8%	1,031 -11.5%	1,006 -13.6%

Brookwood School District 167 - 14/15

Comparison Between Past, Present and Five Year Projected Enrollment - 09/10 to 19/20
Method 2



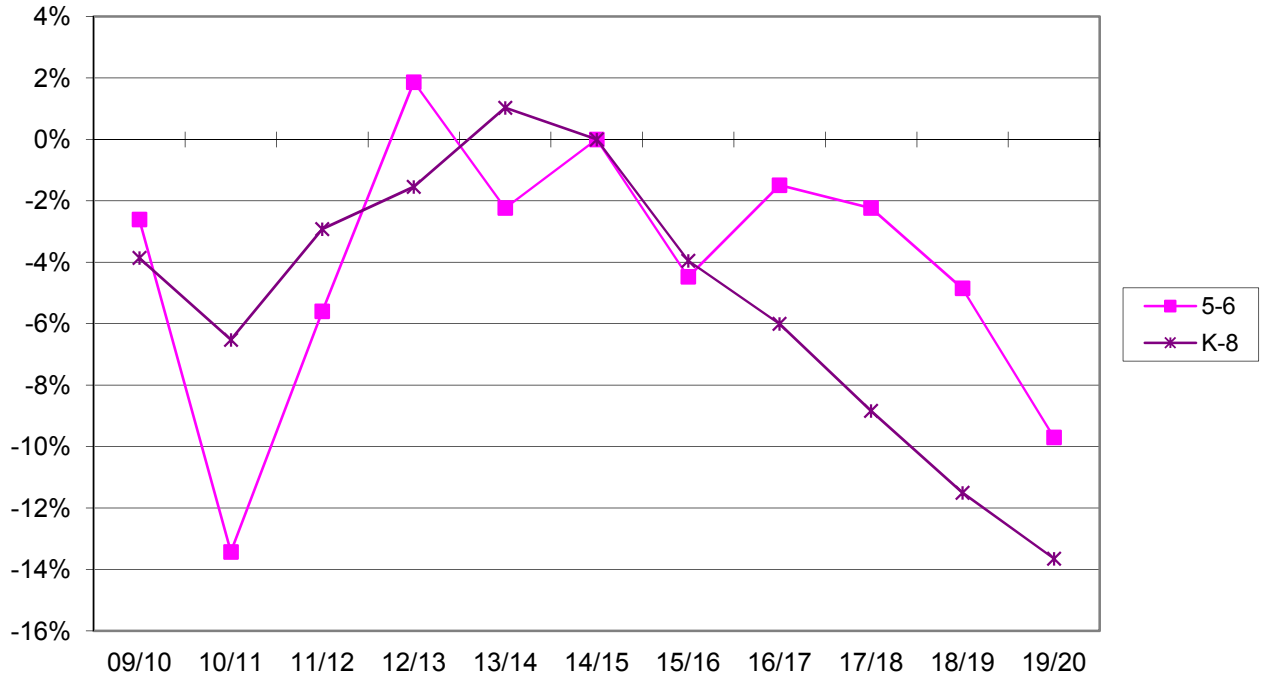
Percentage Difference from Current Enrollment (K-4 vs K-8)
Method 2



Brookwood School District 167 - 14/15

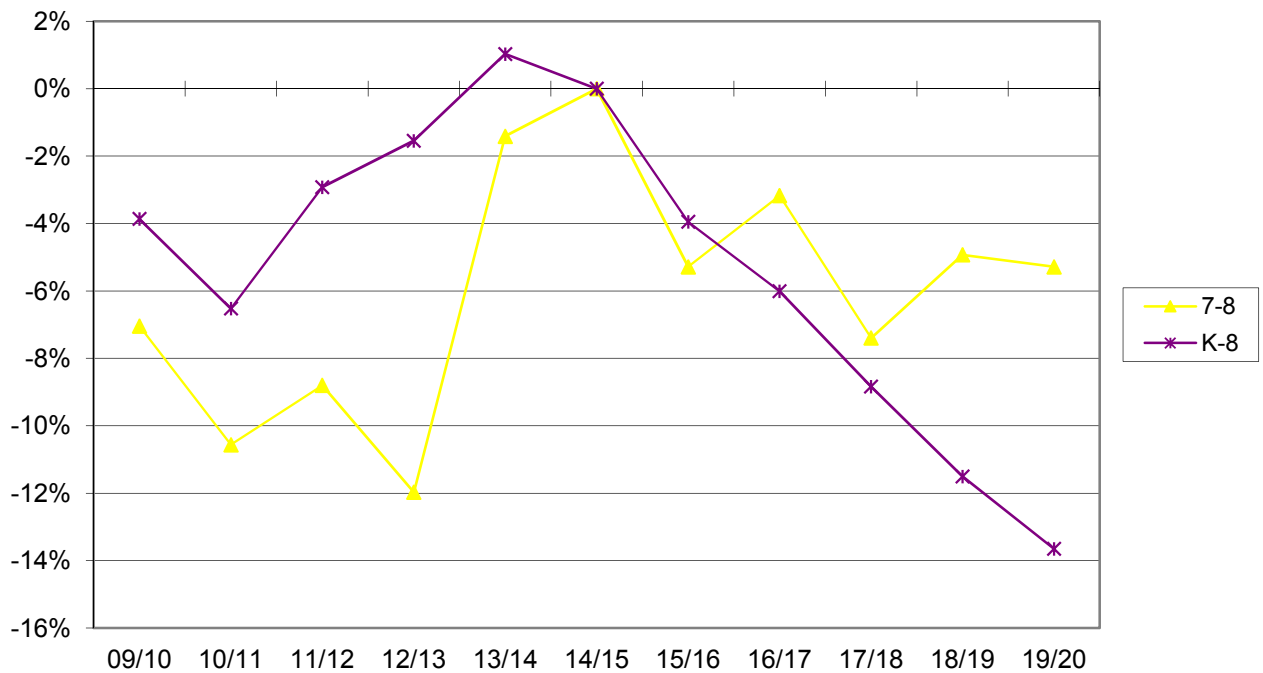
Percentage Difference from Current Enrollment (5-6 vs K-8)

Method 2



Percentage Difference from Current Enrollment (7-8 vs K-8)

Method 2



Brookwood School District 167 - 14/15

Table 7 - Enrollment Projected 10 years - Method 2

	15/16	16/17	17/18	18/19	19/20	20/21	21/22	22/23	23/24	24/25
K	98	96	95	95	93	0	0	0	0	0
1	112	107	105	104	104	102	0	0	0	0
2	131	108	103	101	100	100	98	0	0	0
3	113	122	101	96	94	93	93	92	0	0
4	140	123	133	110	104	102	101	101	100	0
5	124	139	122	132	109	103	101	100	100	99
6	132	125	140	123	133	110	104	102	101	101
7	136	131	124	139	122	132	109	103	101	100
8	133	144	139	131	147	129	140	116	109	107

Brookwood School District 167 - 14/15

Table 8 - Projected Enrollment Five Years

Method 3

	15/16	16/17	17/18	18/19	19/20
K	101 0.34%	99 0.34%	98 0.34%	98 0.34%	95 0.34%
1	112 109.95%	111 109.95%	109 109.95%	108 109.95%	108 109.95%
2	135 99.56%	112 99.56%	111 99.56%	109 99.56%	108 99.56%
3	117 96.49%	130 96.49%	108 96.49%	107 96.49%	105 96.49%
4	137 106.30%	124 106.30%	138 106.30%	115 106.30%	114 106.30%
5	124 99.20%	136 99.20%	123 99.20%	137 99.20%	114 99.20%
6	133 101.59%	126 101.59%	138 101.59%	125 101.59%	139 101.59%
7	138 100.72%	134 100.72%	127 100.72%	139 100.72%	126 100.72%
8	130 104.07%	144 104.07%	139 104.07%	132 104.07%	145 104.07%

K-4	602	576	564	537	530
5-6	257	262	261	262	253
7-8	268	278	266	271	271
K-8	1,127	1,116	1,091	1,070	1,054

Brookwood School District 167 - 14/15

Table 9 - Comparison Between Past, Present and Five Year Projected Enrollments - Method 3
14/15 is the base year. Numbers in italic show percent of current enrollment

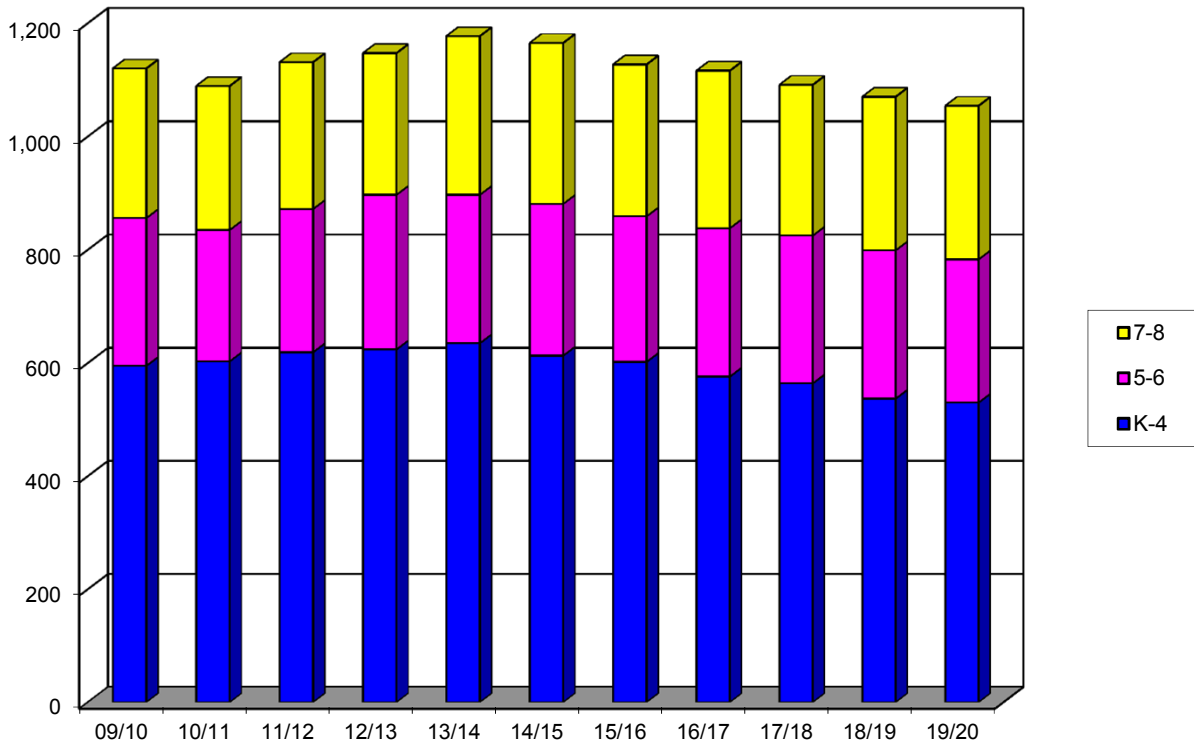
	09/10	10/11	11/12	12/13	13/14	14/15	15/16	16/17	17/18	18/19	19/20
K	108 +5.9%	107 +4.9%	118 +15.7%	113 +10.8%	124 +21.6%	102 +0.0%	101 -1.0%	99 -2.9%	98 -3.9%	98 -3.9%	95 -6.9%
1	121 -11.0%	120 -11.8%	119 -12.5%	127 -6.6%	126 -7.4%	136 +0.0%	112 -17.6%	111 -18.4%	109 -19.9%	108 -20.6%	108 -20.6%
2	116 -4.1%	127 +5.0%	128 +5.8%	118 -2.5%	138 +14.0%	121 +0.0%	135 +11.6%	112 -7.4%	111 -8.3%	109 -9.9%	108 -10.7%
3	129 +0.0%	119 -7.8%	134 +3.9%	126 -2.3%	115 -10.9%	129 +0.0%	117 -9.3%	130 +0.8%	108 -16.3%	107 -17.1%	105 -18.6%
4	121 -3.2%	130 +4.0%	120 -4.0%	140 +12.0%	132 +5.6%	125 +0.0%	137 +9.6%	124 -0.8%	138 +10.4%	115 -8.0%	114 -8.8%
5	127 -3.1%	110 -16.0%	140 +6.9%	121 -7.6%	136 +3.8%	131 +0.0%	124 -5.3%	136 +3.8%	123 -6.1%	137 +4.6%	114 -13.0%
6	134 -2.2%	122 -10.9%	113 -17.5%	152 +10.9%	126 -8.0%	137 +0.0%	133 -2.9%	126 -8.0%	138 +0.7%	125 -8.8%	139 +1.5%
7	119 -4.8%	134 +7.2%	135 +8.0%	116 -7.2%	150 +20.0%	125 +0.0%	138 +10.4%	134 +7.2%	127 +1.6%	139 +11.2%	126 +0.8%
8	145 -8.8%	120 -24.5%	124 -22.0%	134 -15.7%	130 -18.2%	159 +0.0%	130 -18.2%	144 -9.4%	139 -12.6%	132 -17.0%	145 -8.8%

K-4	595 -2.9%	603 -1.6%	619 +1.0%	624 +1.8%	635 +3.6%	613 +0.0%	602 -1.8%	576 -6.0%	564 -8.0%	537 -12.4%	530 -13.5%
5-6	261 -2.6%	232 -13.4%	253 -5.6%	273 +1.9%	262 -2.2%	268 +0.0%	257 -4.1%	262 -2.2%	261 -2.6%	262 -2.2%	253 -5.6%
7-8	264 -7.0%	254 -10.6%	259 -8.8%	250 -12.0%	280 -1.4%	284 +0.0%	268 -5.6%	278 -2.1%	266 -6.3%	271 -4.6%	271 -4.6%
K-8	1,120 -3.9%	1,089 -6.5%	1,131 -2.9%	1,147 -1.5%	1,177 +1.0%	1,165 +0.0%	1,127 -3.3%	1,116 -4.2%	1,091 -6.4%	1,070 -8.2%	1,054 -9.5%

Brookwood School District 167 - 14/15

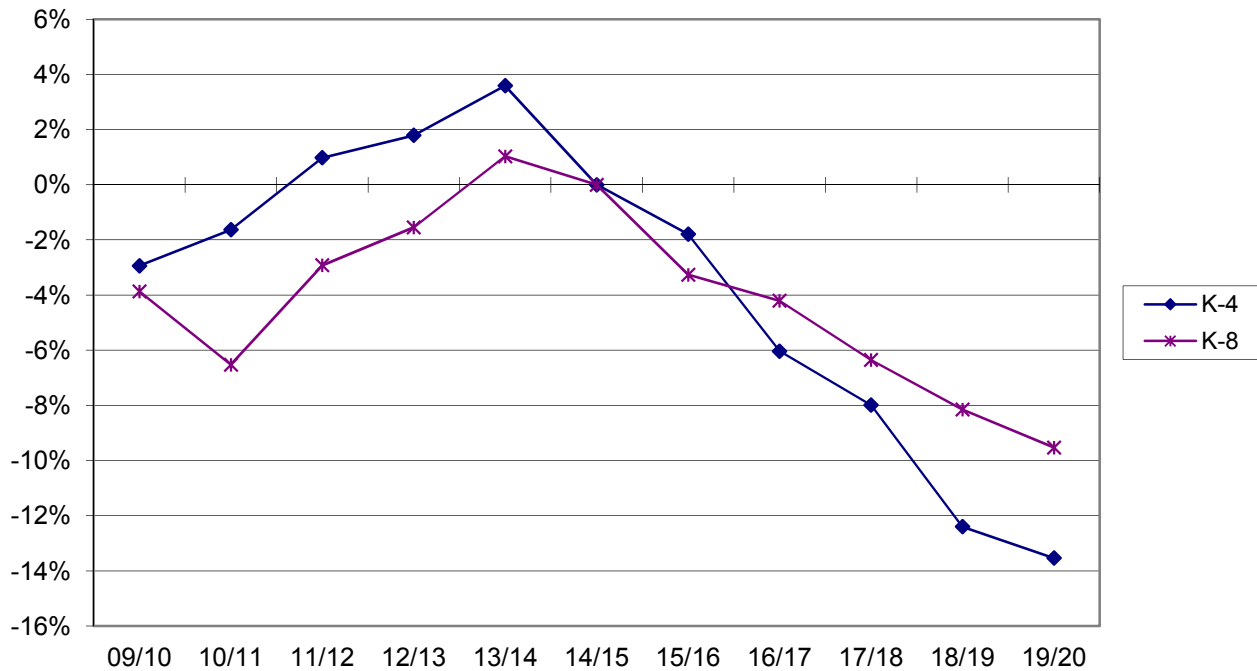
Comparison Between Past, Present and Five Year Projected Enrollment - 09/10 to 19/20

Method 3



Percentage Difference from Current Enrollment (K-4 vs K-8)

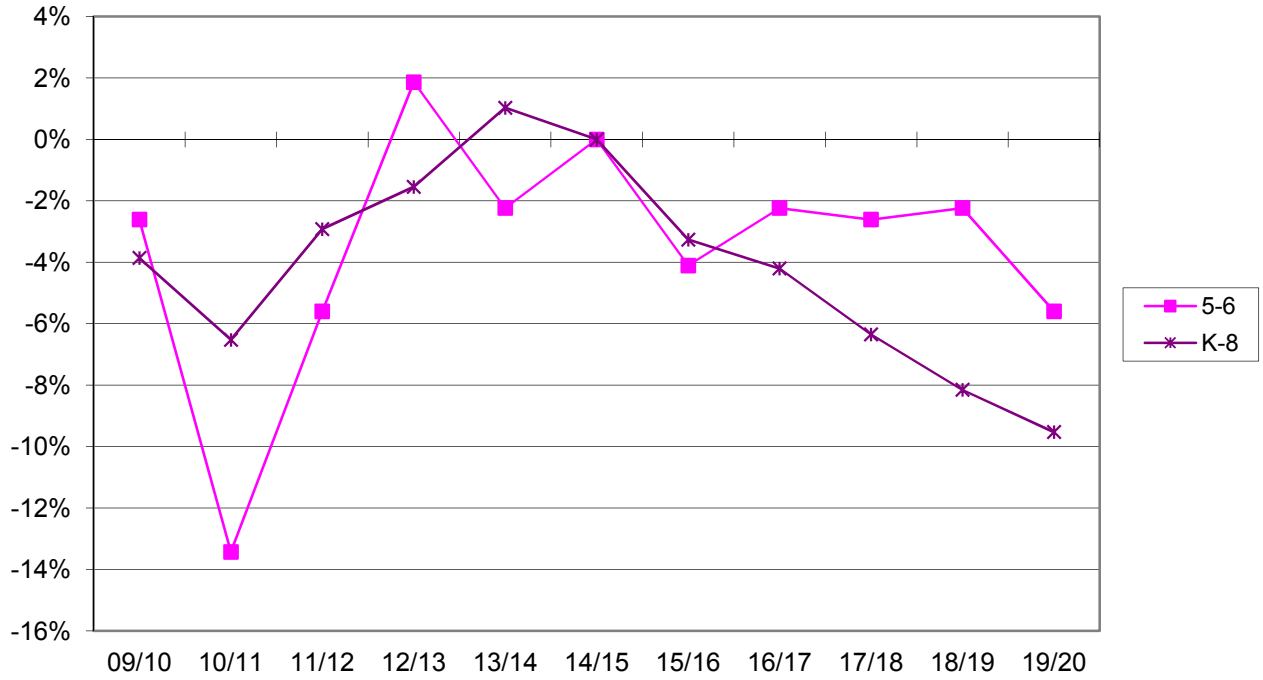
Method 3



Brookwood School District 167 - 14/15

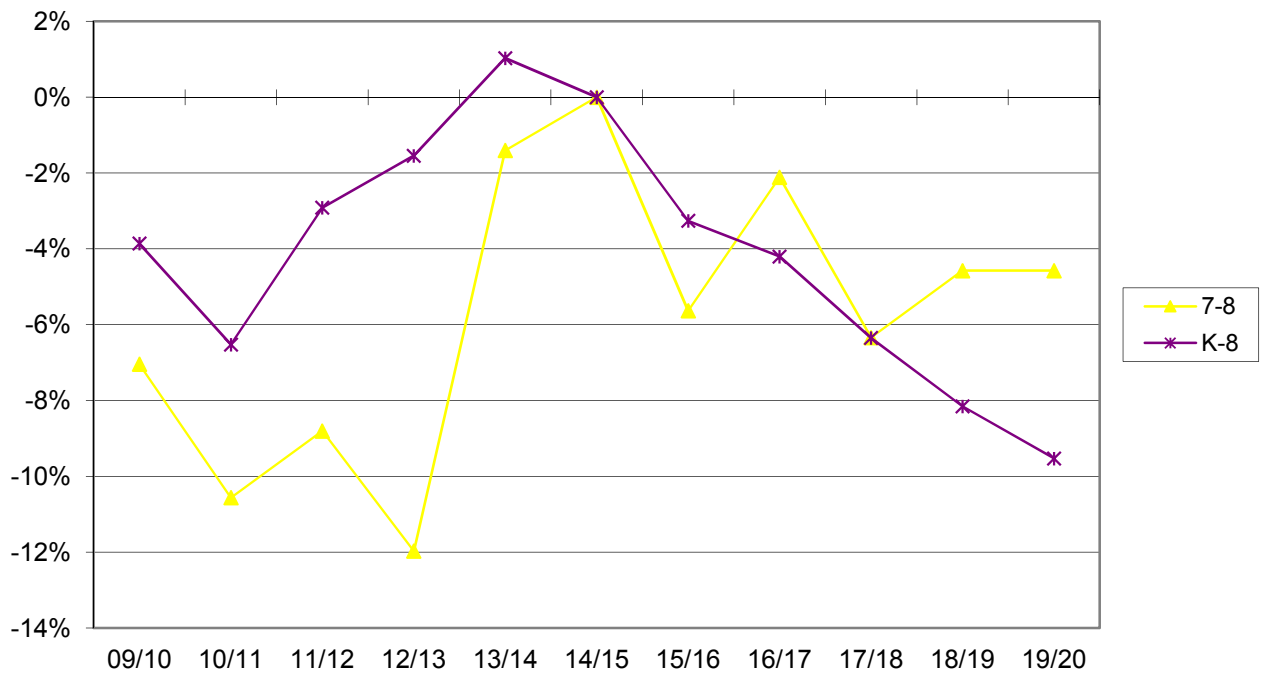
Percentage Difference from Current Enrollment (5-6 vs K-8)

Method 3



Percentage Difference from Current Enrollment (7-8 vs K-8)

Method 3



Brookwood School District 167 - 14/15

Table 10 - Enrollment Projected 10 years - Method 3

	15/16	16/17	17/18	18/19	19/20	20/21	21/22	22/23	23/24	24/25
K	101	99	98	98	95	0	0	0	0	0
1	112	111	109	108	108	104	0	0	0	0
2	135	112	111	109	108	108	104	0	0	0
3	117	130	108	107	105	104	104	100	0	0
4	137	124	138	115	114	112	111	111	106	0
5	124	136	123	137	114	113	111	110	110	105
6	133	126	138	125	139	116	115	113	112	112
7	138	134	127	139	126	140	117	116	114	113
8	130	144	139	132	145	131	146	122	121	119

Brookwood School District 167 - 14/15

Table 11 - Percentage Differences

Actual 14/15 enrollment compared to projected enrollment for each method

Grade	Actual Enrollment	Method 1		Method 2		Method 3	
		Enrollment	% Diff.	Enrollment	% Diff.	Enrollment	% Diff.
K	102	110	7.0%	120	15.0%	115	11.2%
1	136	137	0.6%	138	1.6%	138	1.1%
2	121	132	8.4%	137	11.6%	135	10.1%
3	129	139	7.4%	134	4.1%	137	5.8%
4	125	118	-5.8%	120	-3.8%	119	-4.8%
5	131	131	-0.1%	128	-2.2%	130	-1.1%
6	137	140	2.1%	142	3.3%	141	2.7%
7	125	130	3.7%	124	-0.5%	127	1.6%
8	159	152	-4.8%	168	5.4%	160	0.6%

K-4	613	636	3.6%	650	5.7%	643	4.7%
5-6	268	271	1.0%	270	0.7%	270	0.9%
7-8	284	282	-0.9%	292	2.9%	287	1.0%
K-8	1,165	1,188	2.0%	1,212	3.9%	1,200	3.0%

Brookwood School District 167 - 14/15

Projected Teacher Requirements

Pupil:Teacher Ratio 18:1

	15/16	16/17	17/18	18/19	19/20	20/21	21/22	22/23	23/24	24/25
K	5.8	5.7	5.6	5.6	5.4	0.0	0.0	0.0	0.0	0.0
1	6.2	6.4	6.2	6.2	6.2	6.0	0.0	0.0	0.0	0.0
2	7.8	6.4	6.6	6.4	6.3	6.3	6.2	0.0	0.0	0.0
3	6.7	7.7	6.3	6.6	6.3	6.3	6.3	6.1	0.0	0.0
4	7.4	6.9	8.0	6.6	6.8	6.6	6.5	6.5	6.3	0.0
5	6.9	7.4	6.9	7.9	6.5	6.8	6.5	6.4	6.4	6.3
6	7.4	7.1	7.6	7.1	8.1	6.7	6.9	6.7	6.6	6.6
7	7.8	7.6	7.2	7.7	7.2	8.3	6.8	7.1	6.8	6.8
8	7.1	7.9	7.8	7.4	7.9	7.4	8.4	7.0	7.3	7.0

Brookwood School District 167 - 14/15

Projected Teacher Requirements

Pupil:Teacher Ratio 20:1

	15/16	16/17	17/18	18/19	19/20	20/21	21/22	22/23	23/24	24/25
K	5.2	5.1	5.1	5.1	4.9	0.0	0.0	0.0	0.0	0.0
1	5.6	5.8	5.6	5.6	5.6	5.4	0.0	0.0	0.0	0.0
2	7.0	5.8	6.0	5.8	5.7	5.7	5.6	0.0	0.0	0.0
3	6.0	7.0	5.7	5.9	5.7	5.7	5.7	5.5	0.0	0.0
4	6.7	6.3	7.2	5.9	6.2	5.9	5.9	5.9	5.7	0.0
5	6.2	6.7	6.2	7.2	5.9	6.1	5.9	5.8	5.8	5.7
6	6.7	6.4	6.8	6.4	7.3	6.0	6.3	6.0	6.0	6.0
7	7.0	6.9	6.5	7.0	6.5	7.5	6.2	6.4	6.2	6.1
8	6.4	7.2	7.0	6.7	7.1	6.7	7.6	6.3	6.6	6.3

Brookwood School District 167 - 14/15

Projected Teacher Requirements

Pupil:Teacher Ratio 22:1

	15/16	16/17	17/18	18/19	19/20	20/21	21/22	22/23	23/24	24/25
K	4.7	4.6	4.6	4.6	4.5	0.0	0.0	0.0	0.0	0.0
1	5.1	5.2	5.1	5.0	5.0	4.9	0.0	0.0	0.0	0.0
2	6.4	5.2	5.4	5.2	5.2	5.2	5.0	0.0	0.0	0.0
3	5.5	6.3	5.2	5.4	5.2	5.1	5.1	5.0	0.0	0.0
4	6.1	5.7	6.5	5.4	5.6	5.4	5.3	5.3	5.2	0.0
5	5.6	6.0	5.6	6.5	5.3	5.5	5.3	5.3	5.3	5.1
6	6.1	5.8	6.2	5.8	6.6	5.5	5.7	5.5	5.4	5.4
7	6.4	6.2	5.9	6.3	5.9	6.8	5.6	5.8	5.6	5.5
8	5.8	6.5	6.4	6.0	6.5	6.0	6.9	5.7	6.0	5.7

Brookwood School District 167 - 14/15

Projected Teacher Requirements

Pupil:Teacher Ratio 24:1

	15/16	16/17	17/18	18/19	19/20	20/21	21/22	22/23	23/24	24/25
K	4.3	4.3	4.2	4.2	4.1	0.0	0.0	0.0	0.0	0.0
1	4.7	4.8	4.7	4.6	4.6	4.5	0.0	0.0	0.0	0.0
2	5.8	4.8	5.0	4.8	4.8	4.8	4.6	0.0	0.0	0.0
3	5.0	5.8	4.8	4.9	4.8	4.7	4.7	4.6	0.0	0.0
4	5.6	5.2	6.0	4.9	5.1	4.9	4.9	4.9	4.8	0.0
5	5.2	5.5	5.2	6.0	4.9	5.1	4.9	4.8	4.8	4.7
6	5.6	5.3	5.7	5.3	6.1	5.0	5.2	5.0	5.0	5.0
7	5.8	5.7	5.4	5.8	5.4	6.2	5.1	5.3	5.1	5.1
8	5.3	6.0	5.8	5.5	5.9	5.5	6.3	5.3	5.5	5.3

Brookwood School District 167 - 14/15

Projected Teacher Requirements

Pupil:Teacher Ratio 26:1

	15/16	16/17	17/18	18/19	19/20	20/21	21/22	22/23	23/24	24/25
K	4.0	3.9	3.9	3.9	3.8	0.0	0.0	0.0	0.0	0.0
1	4.3	4.4	4.3	4.3	4.3	4.2	0.0	0.0	0.0	0.0
2	5.4	4.4	4.6	4.4	4.4	4.4	4.3	0.0	0.0	0.0
3	4.6	5.3	4.4	4.5	4.4	4.3	4.3	4.2	0.0	0.0
4	5.2	4.8	5.5	4.5	4.7	4.5	4.5	4.5	4.4	0.0
5	4.8	5.1	4.8	5.5	4.5	4.7	4.5	4.5	4.5	4.3
6	5.2	4.9	5.2	4.9	5.6	4.6	4.8	4.6	4.6	4.6
7	5.4	5.3	5.0	5.3	5.0	5.7	4.7	4.9	4.7	4.7
8	4.9	5.5	5.4	5.1	5.5	5.1	5.8	4.8	5.0	4.8

Brookwood School District 167 - 14/15

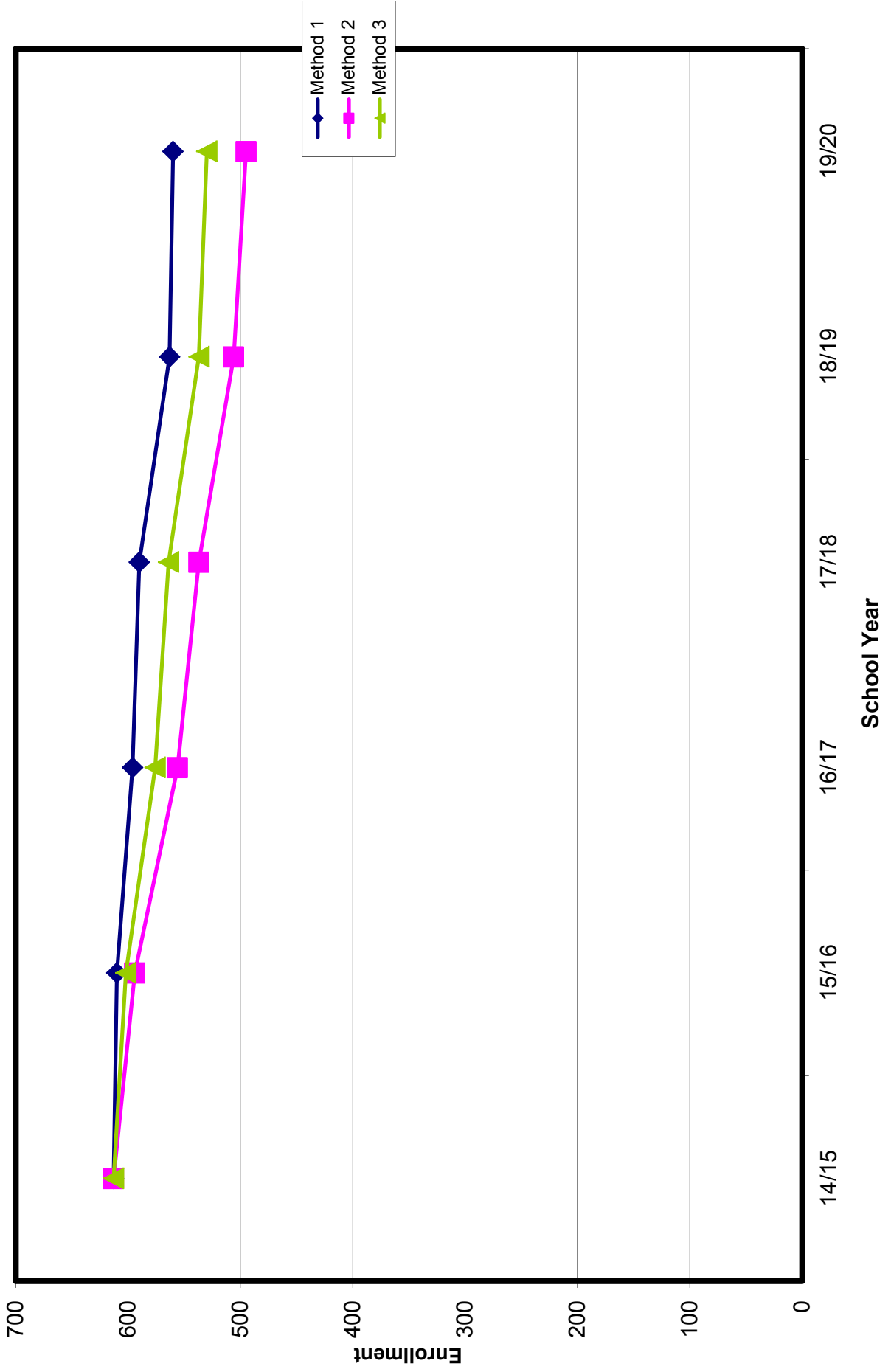
Projected Teacher Requirements

Pupil:Teacher Ratio 28:1

	15/16	16/17	17/18	18/19	19/20	20/21	21/22	22/23	23/24	24/25
K	3.7	3.6	3.6	3.6	3.5	0.0	0.0	0.0	0.0	0.0
1	4.0	4.1	4.0	4.0	4.0	3.9	0.0	0.0	0.0	0.0
2	5.0	4.1	4.3	4.1	4.1	4.1	4.0	0.0	0.0	0.0
3	4.3	5.0	4.1	4.2	4.1	4.0	4.0	3.9	0.0	0.0
4	4.8	4.5	5.1	4.2	4.4	4.2	4.2	4.2	4.1	0.0
5	4.4	4.8	4.4	5.1	4.2	4.4	4.2	4.1	4.1	4.0
6	4.8	4.5	4.9	4.5	5.2	4.3	4.5	4.3	4.3	4.3
7	5.0	4.9	4.6	5.0	4.6	5.3	4.4	4.6	4.4	4.4
8	4.6	5.1	5.0	4.8	5.1	4.8	5.4	4.5	4.7	4.5

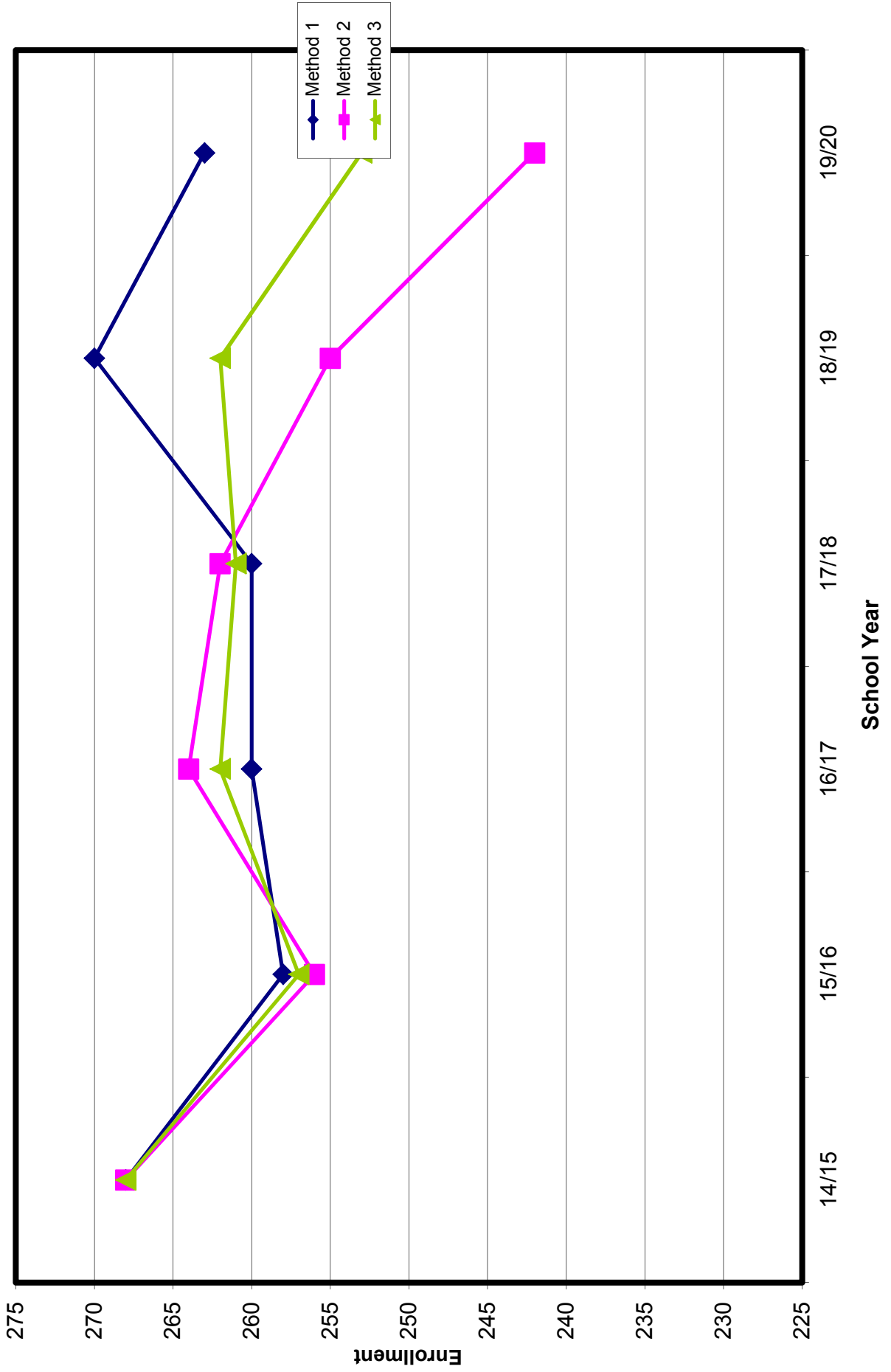
Brookwood School District 167 - 14/15

K-4 Projected Enrollment



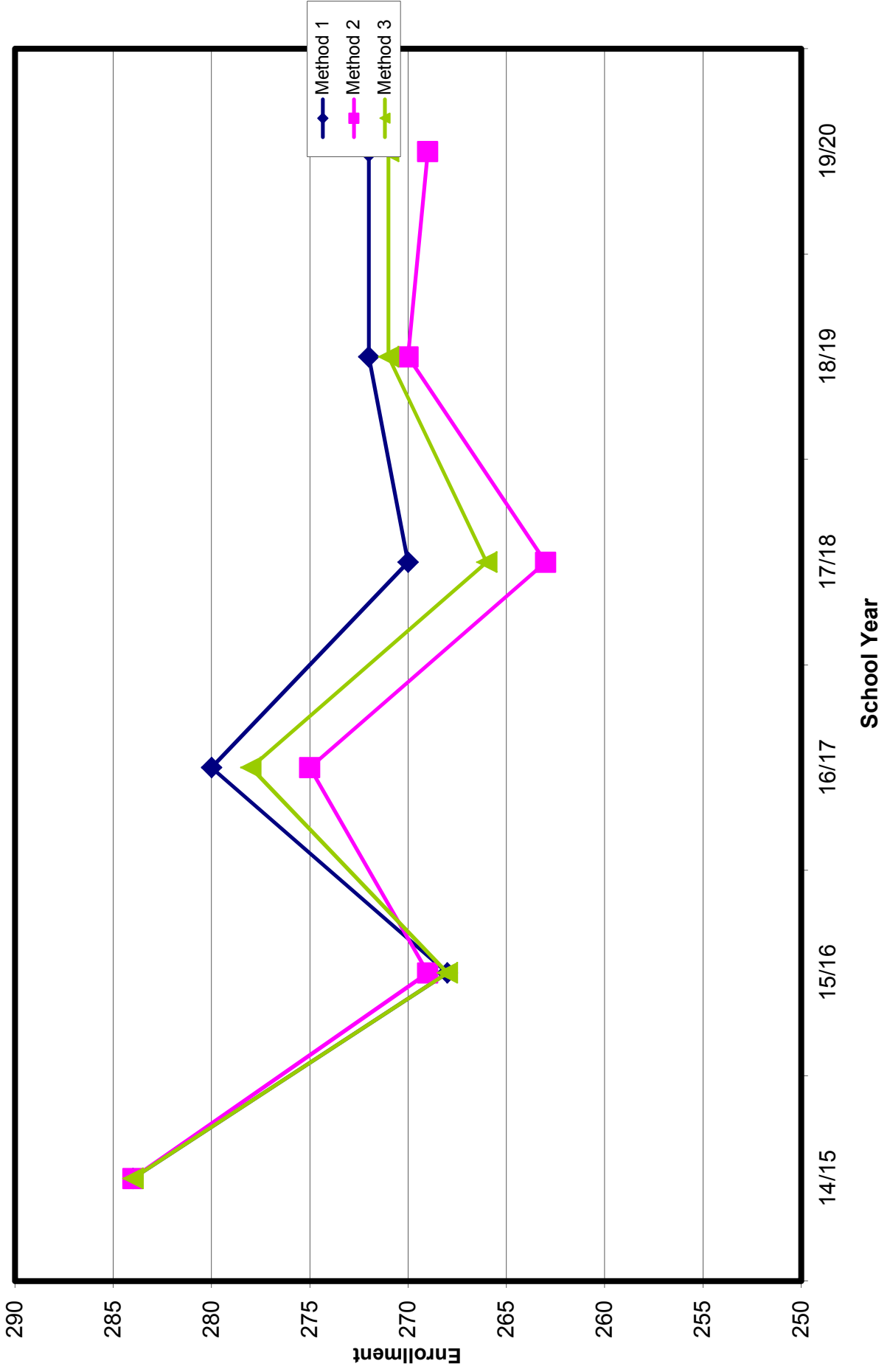
Brookwood School District 167 - 14/15

5-6 Projected Enrollment



Brookwood School District 167 - 14/15

7-8 Projected Enrollment



Brookwood School District 167 - 14/15

K-8 Projected Enrollment

